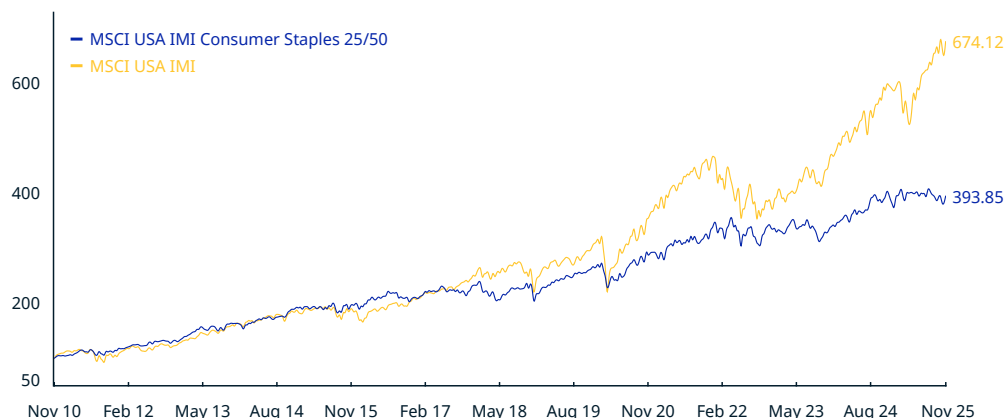


MSCI USA IMI Consumer Staples 25/50 Index (USD)

The MSCI USA IMI Consumer Staples 25/50 Index captures the large, mid and small cap segments of the USA market. All securities in the index are classified in the Consumer Staples sector according to the Global Industry Classification Standard (GICS®). The index also applies certain investment limits to help ensure diversification limits that are imposed on regulated investment companies, or RICs, under the current US Internal Revenue Code.

For a complete description of the index methodology, please see [Index methodology - MSCI](#).

CUMULATIVE INDEX PERFORMANCE – NET RETURNS (USD) (NOV 2010 – NOV 2025)



ANNUAL PERFORMANCE (%)

Year	MSCI USA IMI Consumer Staples 25/50	MSCI USA IMI
2024	12.60	23.32
2023	1.55	25.64
2022	-2.39	-19.61
2021	16.77	25.62
2020	10.02	20.46
2019	25.28	30.39
2018	-8.46	-5.72
2017	11.14	20.59
2016	5.48	11.95
2015	4.78	0.03
2014	14.84	11.87
2013	27.24	32.60
2012	10.07	15.63
2011	12.90	0.63

INDEX PERFORMANCE – NET RETURNS (%) (NOV 28, 2025)

	1 Mo	3 Mo	1 Yr	YTD	ANNUALIZED			
					3 Yr	5 Yr	10 Yr	Since Nov 30, 1998
MSCI USA IMI Consumer Staples 25/50	3.65	-1.14	-2.11	3.06	4.43	6.50	7.35	6.88
MSCI USA IMI	0.14	5.91	13.25	16.84	19.42	13.82	13.60	8.44

INDEX RISK AND RETURN CHARACTERISTICS (NOV 28, 2025)

	Turnover (%) ¹	ANNUALIZED STD DEV (%) ²			SHARPE RATIO ^{2,3}			Since Nov 30, 1998	MAXIMUM DRAWDOWN	
		3 Yr	5 Yr	10 Yr	3 Yr	5 Yr	10 Yr		(%)	Period YYYY-MM-DD
MSCI USA IMI Consumer Staples 25/50	9.57	10.60	12.61	12.39	0.01	0.31	0.46	0.43	38.51	1998-12-29–2000-03-14
MSCI USA IMI	1.61	13.30	15.48	15.69	1.05	0.72	0.76	0.45	55.69	2007-10-09–2009-03-09

¹ Last 12 months

² Based on monthly net returns data

³ Based on NY FED Overnight SOFR from Sep 1 2021 & on ICE LIBOR 1M prior that date

MSCI USA IMI Consumer Staples 25/50 Index (USD)

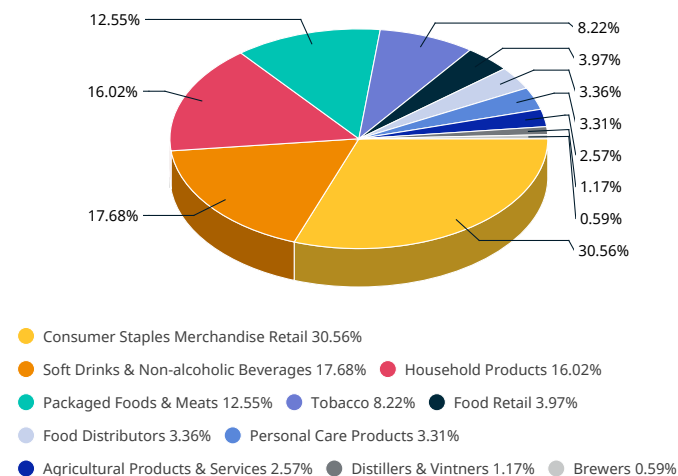
INDEX CHARACTERISTICS

MSCI USA IMI Consumer Staples 25/50	
Number of Constituents	94
Mkt Cap (USD Millions)	
Index	3,043,129.73
Largest	441,981.89
Smallest	760.38
Average	32,373.72
Median	9,852.39

TOP 10 CONSTITUENTS

	Float Adj Mkt Cap (USD Billions)	Index Wt. (%)
WALMART	441.98	14.52
COSTCO WHOLESALE CORP	365.02	11.99
PROCTER & GAMBLE CO	306.84	10.08
COCA COLA (THE)	258.17	8.48
PEPSICO	137.82	4.53
PHILIP MORRIS INTL	135.44	4.45
ALTRIA GROUP	103.43	3.40
MONDELEZ INTERNATIONAL A	78.72	2.59
COLGATE-PALMOLIVE	66.01	2.17
MONSTER BEVERAGE	59.40	1.95
Total	1,952.82	64.17

SUB-INDUSTRY WEIGHTS



The MSCI USA IMI Consumer Staples 25/50 Index was launched on Sep 22, 2020. Data prior to the launch date is back-tested test (i.e. calculations of how the index might have performed over that time period had the index existed). There are frequently material differences between back-tested performance and actual results. Past performance – whether actual or back-tested – is no indication or guarantee of future performance.

ABOUT MSCI

MSCI (NYSE: MSCI Inc.) strengthens global markets by connecting participants across the financial ecosystem with a common language. Our research-based data, analytics and indexes, supported by advanced technology, set standards for global investors and help our clients understand risks and opportunities so they can make better decisions and unlock innovation. We serve asset managers and owners, private-market sponsors and investors, hedge funds, wealth managers, banks, insurers and corporates. To learn more, please visit www.msci.com.

The data, data feeds, databases, reports, text, graphs, charts, images, videos, recordings, models, metrics, analytics, indexes, assessments, ratings, scores, software, websites, products, services and other information delivered in connection with this notice (the "Information"): (a) are proprietary information of MSCI and its suppliers, (b) may not be used for commercial purposes without prior written permission from MSCI Inc. or its affiliates ("MSCI"), and (c) are not investment advice and must not be relied on as such. The Information and its use are further subject to the disclaimer at <https://www.msci.com/legal/notice-and-disclaimer>. As detailed therein, MSCI AND ITS SUPPLIERS MAKE NO EXPRESS OR IMPLIED WARRANTIES OF MERCHANTABILITY, FITNESS FOR A PARTICULAR PURPOSE OR OTHERWISE WITH RESPECT TO THE INFORMATION HEREIN AND DISCLAIM ALL LIABILITY TO THE MAXIMUM EXTENT PERMITTED BY LAW. For information about how MSCI collects and uses personal data, refer to <https://www.msci.com/privacy-pledge>.

© 2025 MSCI Inc. All rights reserved.

